

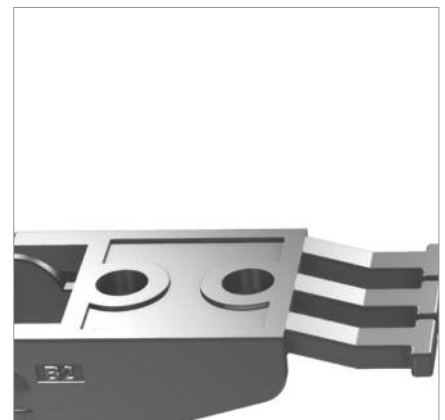
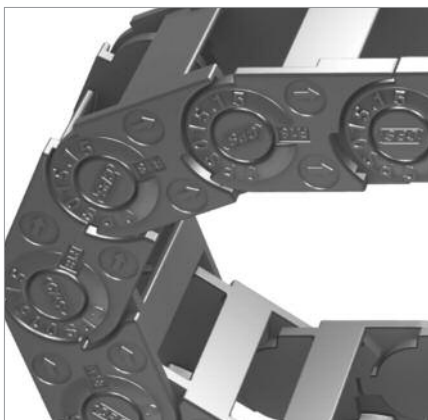


2014 GENERAL CATALOGUE
CPS CABLE CHAIN(MINI)

▶ CPS CABLE CHAIN MINI Type외 다른 대체 사양 안내는 p358에 게재되어 있습니다.

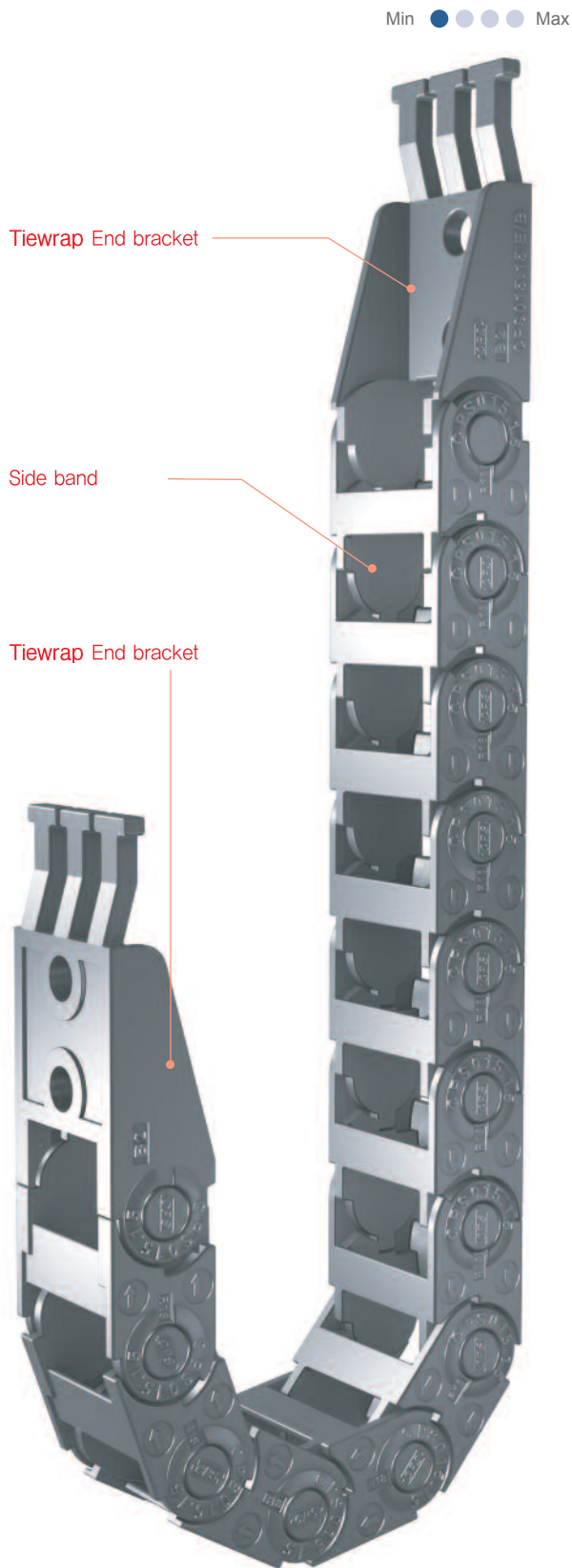
KINDS AND DIMENSIONS / 제품종류와 치수안내 (주문표)

CPS Cable Chain MINI-Type	Pitch	Bending Radius R 	Weight kg/m	Speed m/sec	Temperature °C	Clearance 				Frame style	Divider possible with frame
						A	B	C	D		
CPS015.06	15	18, 28, 38	0.100	10	-30 ~ +130	12.6	13	6	10		
CPS015.10	15		0.106			16.6	13	10	10		
CPS015.15	15		0.111			21.6	13	15	10		
CPS015.20	15		0.115			26.6	13	20	10		
CPS020.15	20	28, 38, 48	0.24	10	-30 ~ +130	24	20	15	14.5		
CPS020.20	20		0.26			29	20	20	14.5		
CPS020.30	20		0.28			39	20	30	14.5		
CPS020.40	20		0.31			49	20	40	14.5		
CPS030.15	30	38, 48, 75, 100	0.38	10	-30 ~ +130	29	26	15	19		
CPS030.25	30		0.40			39	26	25	19		
CPS030.35	30		0.42			49	26	35	19		
CPS030.50	30		0.44			64	26	50	19		
CPS033.27	33	35, 45, 75, 100, 120	0.55	10	-30 ~ +130	45	31	27	23		
CPS033.37	33		0.59			55	31	37	23		
CPS033.47	33		0.61			65	31	47	23		
CPS033.67	33		0.68			85	31	67	23		
CPS033.77	33		0.70			95	31	77	23		



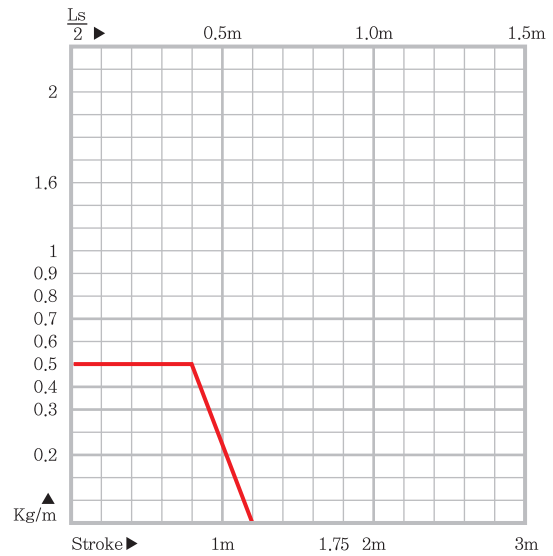


MINI Type CPS 015



MATERIAL

- **Chain material :**
CPS-polyamide with glass fiber reinforced, UL94-HB
- **Low Noise :** 40 dB (DIN EN 61672-1)
- **Speed :** 10m / sec
- **Temperature :** -30°C ~ +130°C
- **Other installation Length**
Vertical curve above= max 0.8m
Vertical curve below= max 3.0m
Side Mounted, Unsupported= max 0.2m
- **Applications :** Printing Machine, Feeder unit
Count machine.
- **Load diagrams**
self-supporting length :

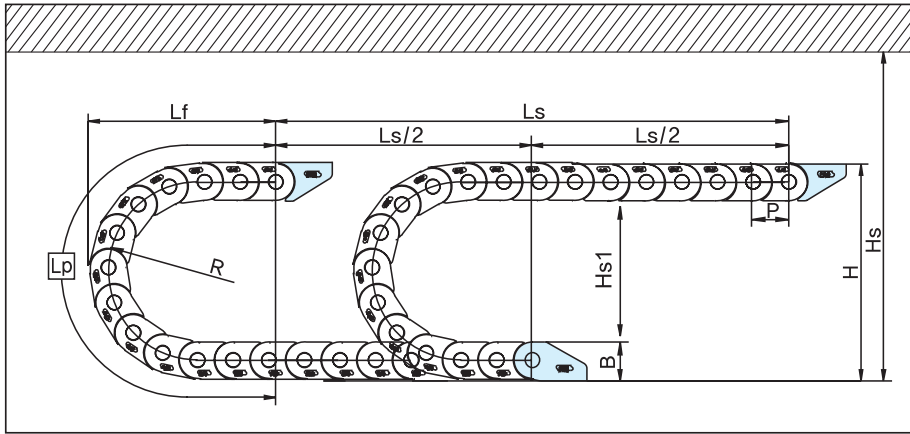


● Calculation of the chain length

$$\left[L = \frac{Ls}{2} + Lp \right]$$

MINI Type CPS 015

LAYOUT OF THE CHAIN



- Ls:** Stroke
- Lp:** Loop Length
- Lf:** Loop Projection
- Hs:** Safe Space

CPS 015 Type

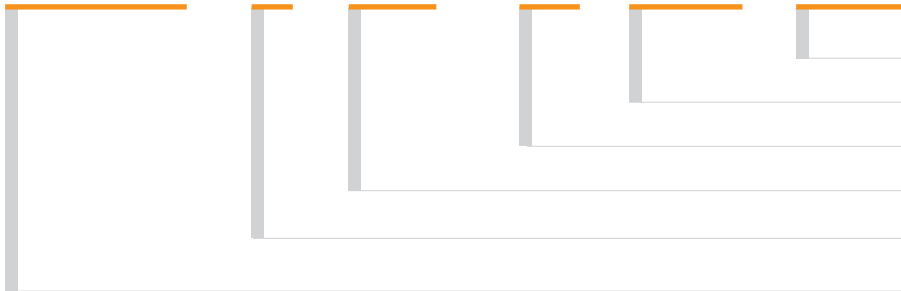
- Pitch P:** 15mm
- Height B:** 13mm
- Height H:** 2R+Bmm
- Hs ≤ H+10mm**
- Hs1 ≤ -10mm**

(Dimensions in mm)

Bending radius R	18	28	38
Lp	117	148	180
Lf	55	65	75
H	49	69	89

ORDERING (주문방법)

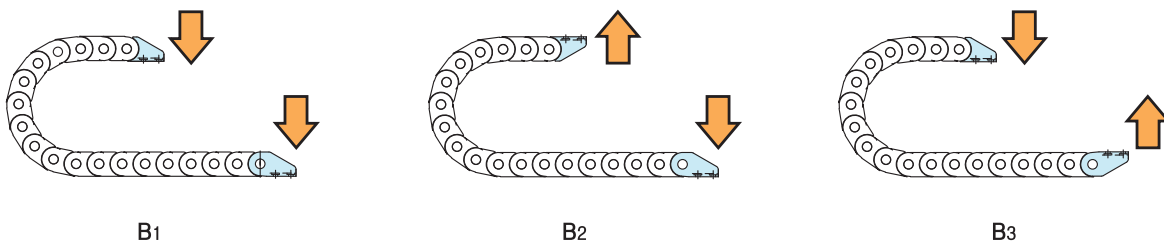
CPS 015 . 10. R28 / B₂ - 550L : 10ST



- 주문수량 Q'ty(set)
- 체인길이 Length(mm)
- 브라켓타입 Bracket Type (B1, B2, B3)
- 곡률반경 Bending Radius
- 내폭 Inside Width

CPS CABLE Chain

BRACKET TYPE (브라켓타입)



B1

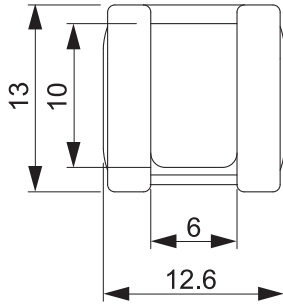
B2

B3

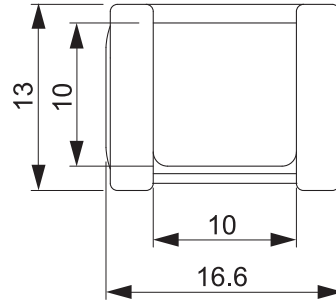


MINI Type **CPS 015**

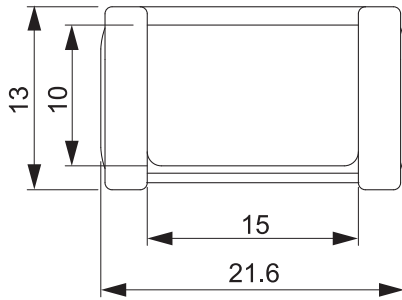
CHAIN CROSS SECTION



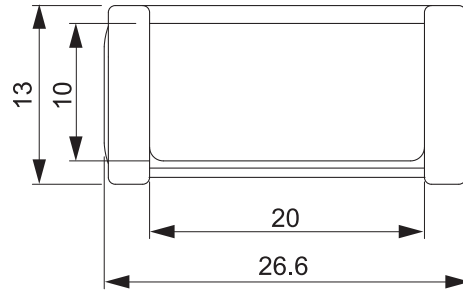
CPS015.06 Type



CPS015.10 Type



CPS015.15 Type



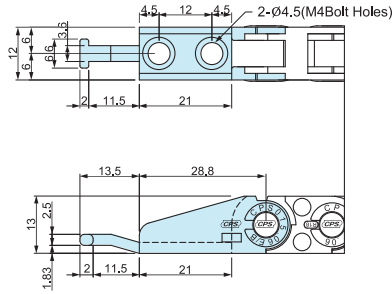
CPS015.20 Type

CHAIN RADIUS, WEIGHT

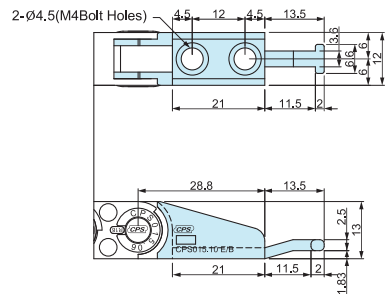
Chain Type	Bending Radius(R)	Weight in kg/m
CPS 015.06	18, 28, 38	0.100
CPS 015.10		0.106
CPS 015.15		0.111
CPS 015.20		0.115

MINI Type CPS 015

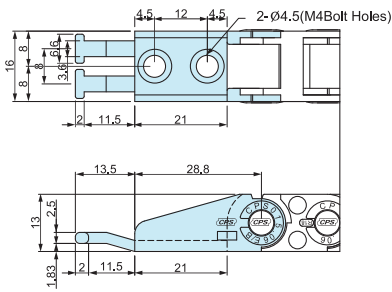
END BRACKET (Tie Wrap Type)



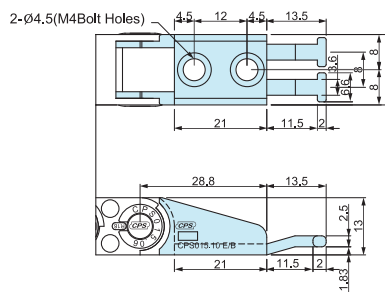
▲ CPS015.06 Fixing point



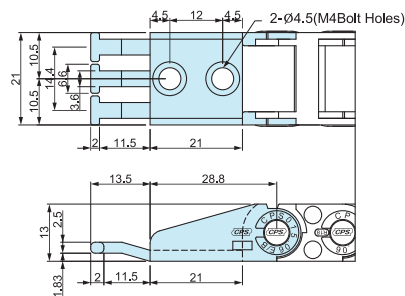
▲ CPS015.06 Moving point



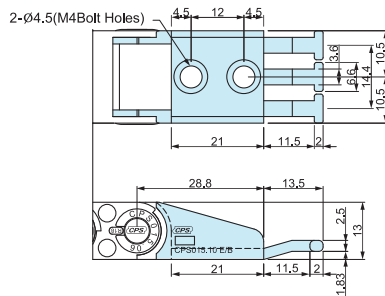
▲ CPS015.10 Fixing point



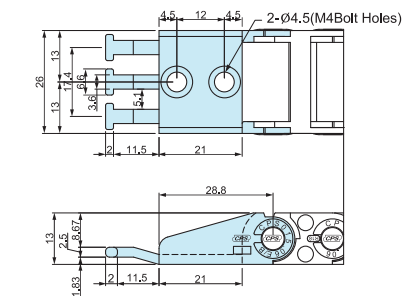
▲ CPS015.10 Moving point



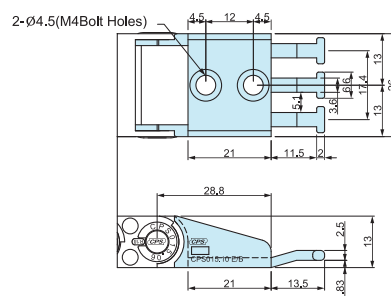
▲ CPS015.15 Fixing point



▲ CPS015.15 Moving point



▲ CPS015.20 Fixing point



▲ CPS015.20 Moving point

CPS CABLE CHAIN

SHIFT CHAIN

SABIN CHAIN

REVOLVING CHAIN

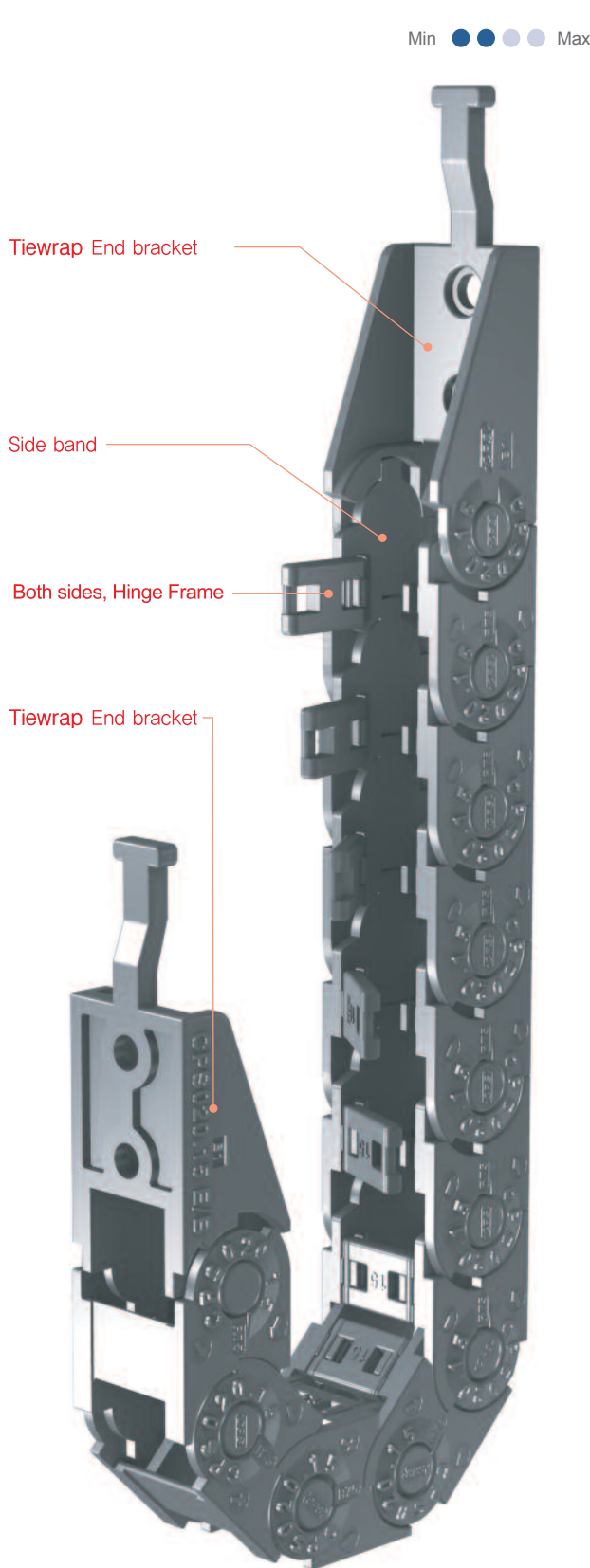
HELIX CHAIN

ROBO-KIT

CPS FLEX

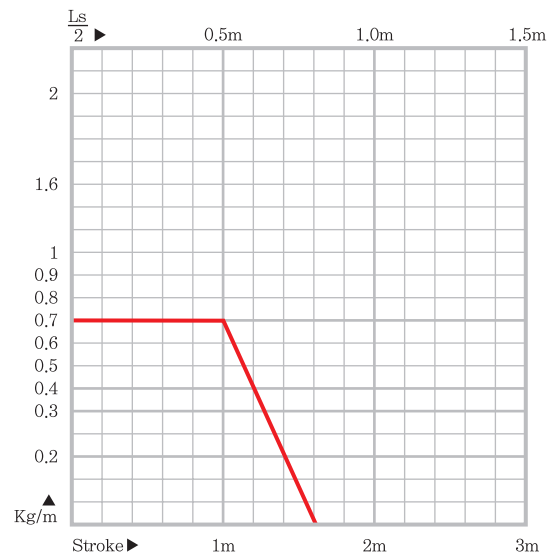
CPS FIX

MINI Type **CPS 020**



MATERIAL

- **Chain material :**
CPS-polyamide with glass fiber reinforced, UL94-HB
- **Low Noise :** 40 dB (DIN EN 61672-1)
- **Speed :** 10m / sec
- **Temperature :** -30°C ~ +130°C
- **Other installation Length**
Vertical curve above= max 1.0m
Vertical curve below= max 5.0m
Side Mounted, Unsupported= max 0.5m
- **Applications :** Printing Machine, Feeder unit
Count machine
- **Load diagrams**
self-supporting length :

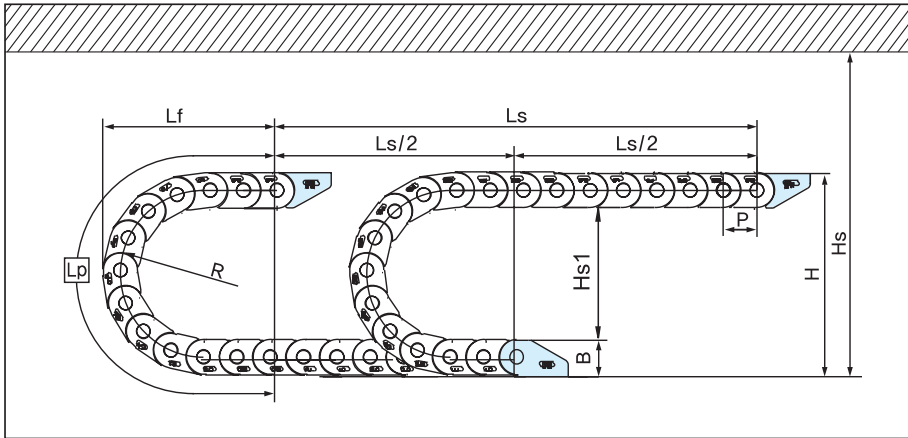


- **Calculation of the chain length**

$$\left[L = \frac{Ls}{2} + Lp \right]$$

MINI Type CPS 020

LAYOUT OF THE CHAIN



- Ls:** Stroke
- Lp:** Loop Length
- Lf:** Loop Projection
- Hs:** Safe Space

CPS 020 Type

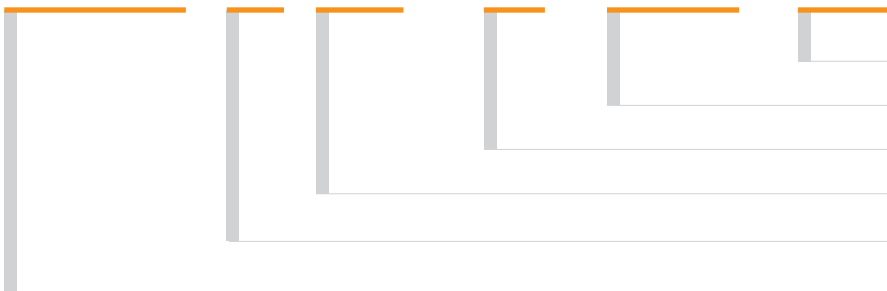
- Pitch P:** 20mm
- Height B:** 20mm
- Height H:** 2R+Bmm
- Hs ≤ H+15mm**
- Hs1 ≤ - 15mm**

(Dimensions in mm)

Bending radius R	28	38	48
Lp	170	200	230
Lf	78	88	98
H	76	96	116

ORDERING (주문방법)

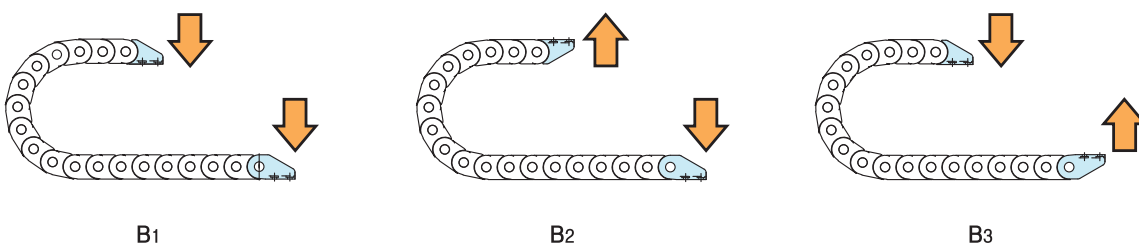
CPS 020 . 30. R28 / B₂ - 1000L : 10ST



- 주문수량 Q'ty(set)
- 체인길이 Length(mm)
- 브라켓타입 Bracket Type (B1, B2, B3)
- 곡률반경 Bending Radius (R)
- 내폭 Inside Width

CPS CABLE Chain

BRACKET TYPE (브라켓타입)



B1

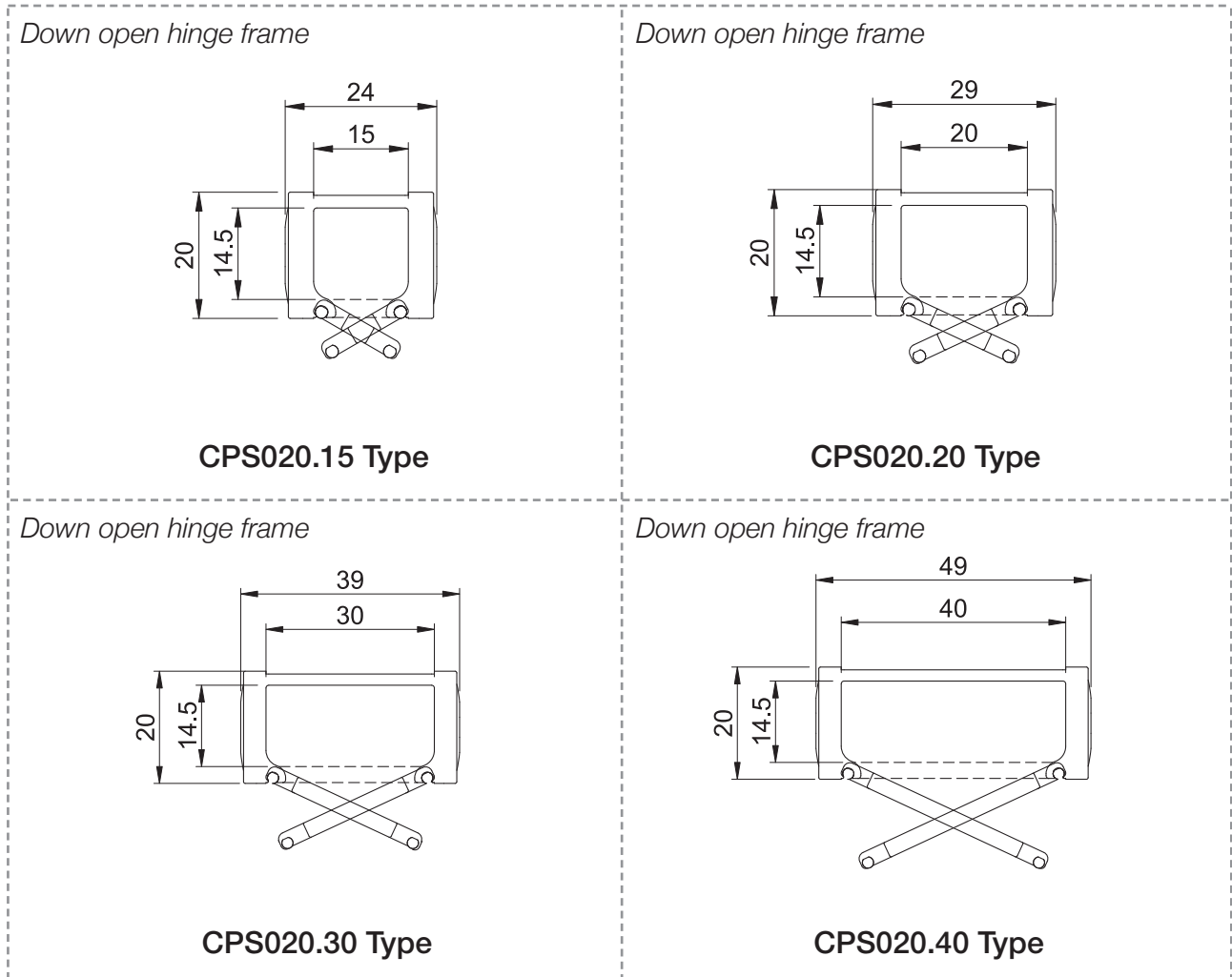
B2

B3



MINI Type **CPS 020**

CHAIN CROSS SECTION

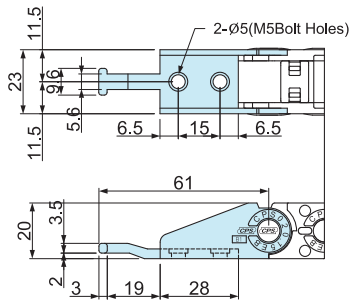


CHAIN RADIUS, WEIGHT

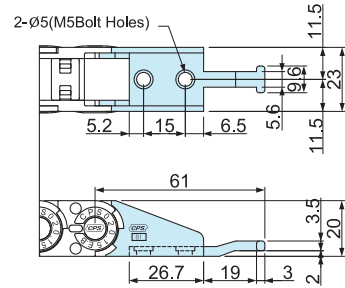
Chain Type	Bending Radius(R)	Weight in kg/m
CPS 020.15	28, 38, 48	0.245
CPS 020.20		0.260
CPS 020.30		0.285
CPS 020.40		0.310

MINI Type **CPS 020**

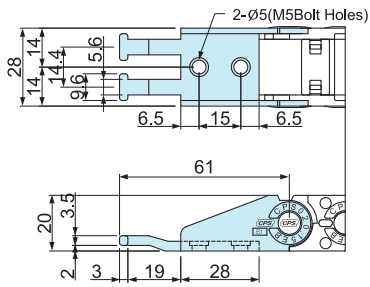
END BRACKET (Tie Wrap Type)



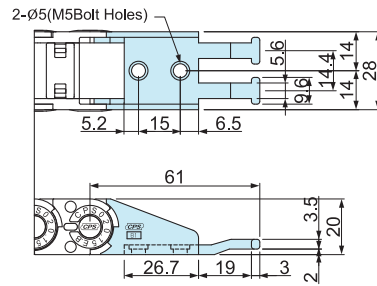
▲ CPS020.15 Fixing point



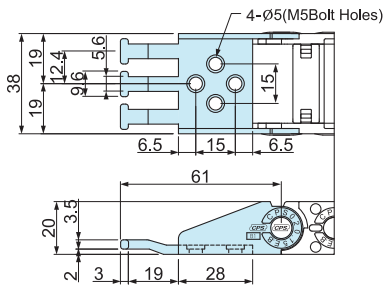
▲ CPS020.15 Moving point



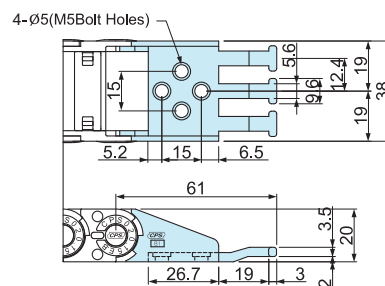
▲ CPS020.20 Fixing point



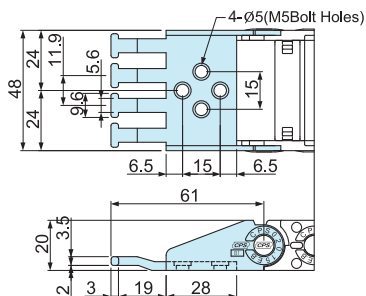
▲ CPS020.20 Moving point



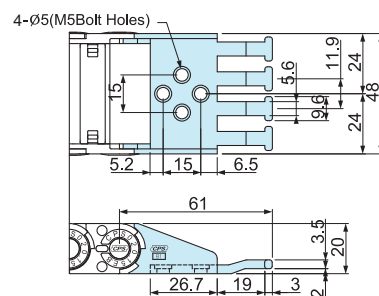
▲ CPS020.30 Fixing point



▲ CPS020.30 Moving point



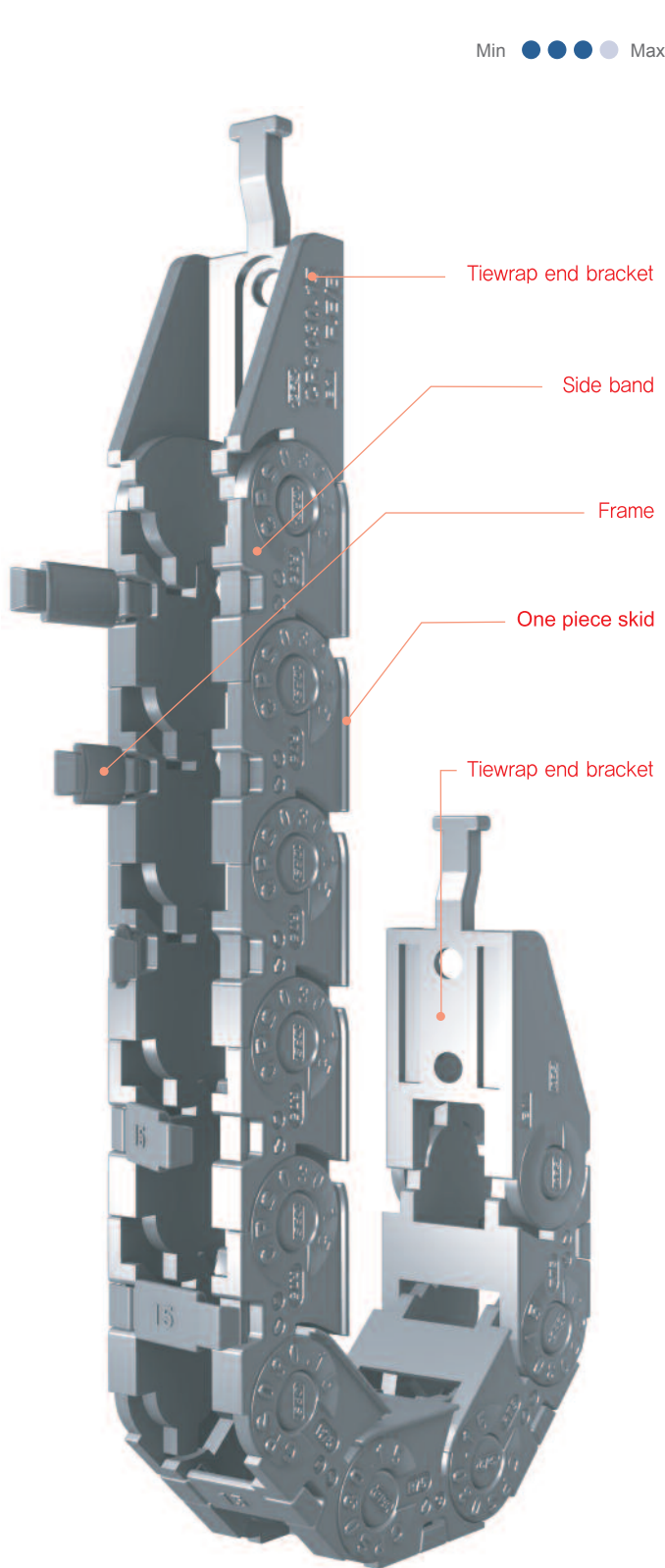
▲ CPS020.40 Fixing point



▲ CPS020.40 Moving point



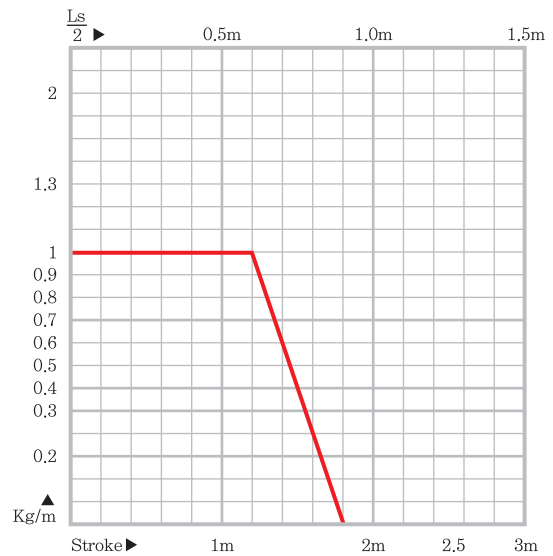
MINI Type CPS 030



MATERIAL

- **Chain material :**
CPS-polyamide with glass fiber reinforced, UL94-HB
- **Low Noise :** 40 dB (DIN EN 61672-1)
- **Speed :** 10m / sec
- **Temperature :** -30°C ~ +130°C
- **Other installation Length**
Vertical curve above= max 1.5m
Vertical curve below= max 10m
Side Mounted, Unsupported= max 0.6m
- **Applications :**
Gantry robot, Machining center,
Textile machine, Welding machine,
Feeder unit, Assembly loader,
Wood work machine, Fabric machine.

Load diagrams self-supporting length :

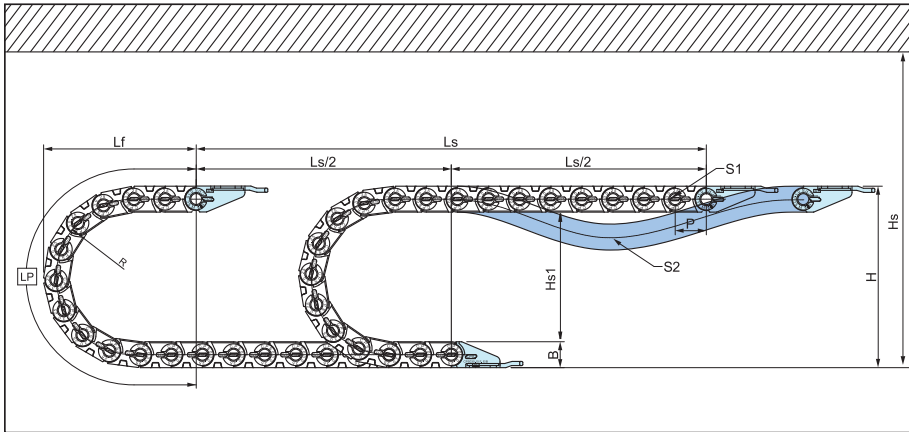


Calculation of the chain length

$$\left[L = \frac{L_s}{2} + L_p \right]$$

MINI Type CPS 030

LAYOUT OF THE CHAIN



- Ls:** Stroke
- Lp:** Loop Length
- Lf:** Loop Projection
- Hs:** Safe Space

CPS 030 Type

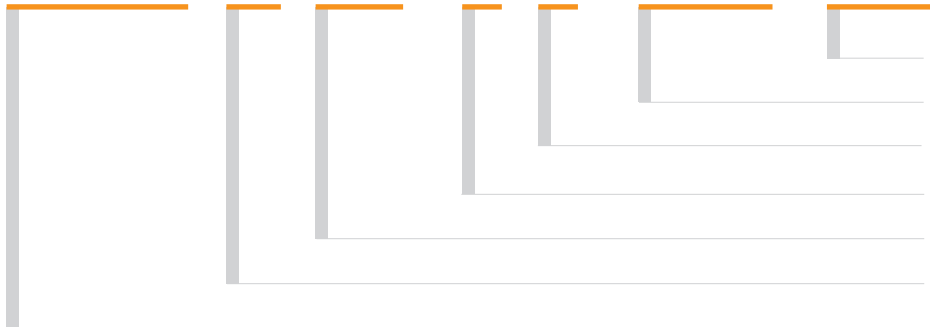
- Pitch P:** 30mm
- Height B:** 26mm
- Height H:** 2R+Bmm
- Hs ≤ H+30mm**
- Hs1 ≤ - 30mm**

(Dimensions in mm)

Bending radius R	38	48	75	100
Lp	240	271	356	434
Lf	110	119	148	173
H	101	121	175	225

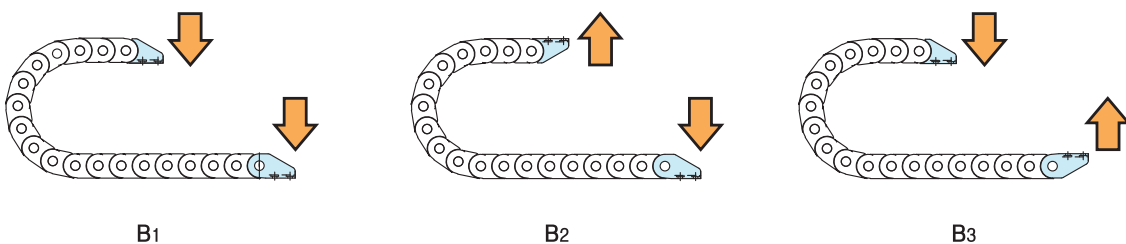
ORDERING (주문방법)

CPS 030 . 35. R75 / B₂ T - 1000L : 10ST



- 주문수량 Q'ty(set)
 - 체인길이 Length(mm)
 - 타이랩 브라켓 Tiewrap bracket(T)
 - 브라켓타입 Bracket Type (B1, B2, B3)
 - 곡률반경 Bending Radius (R)
 - 내폭 Inside Width
- CPS CABLE Chain**

BRACKET TYPE (브라켓타입)



B1

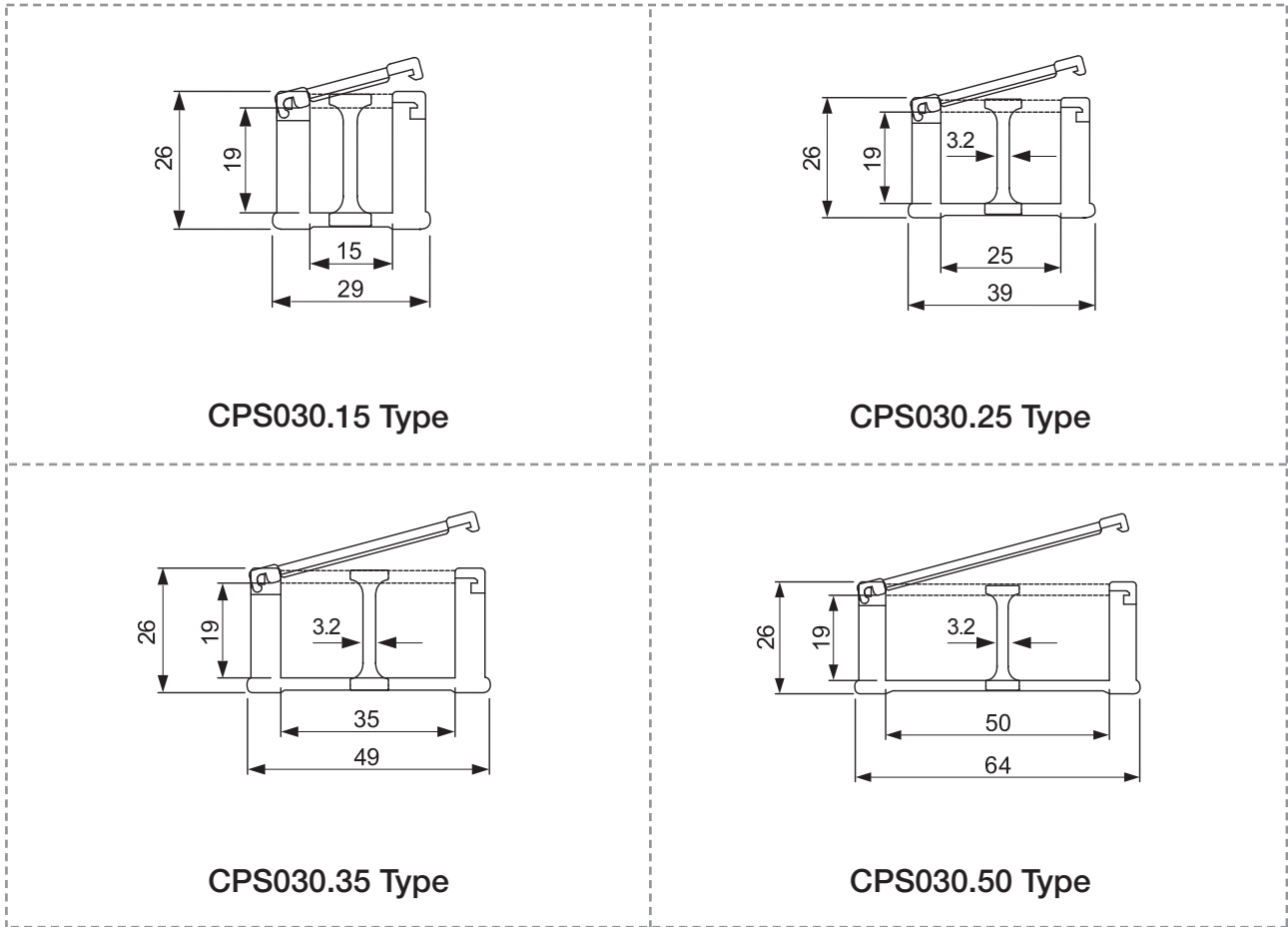
B2

B3



MINI Type **CPS 030**

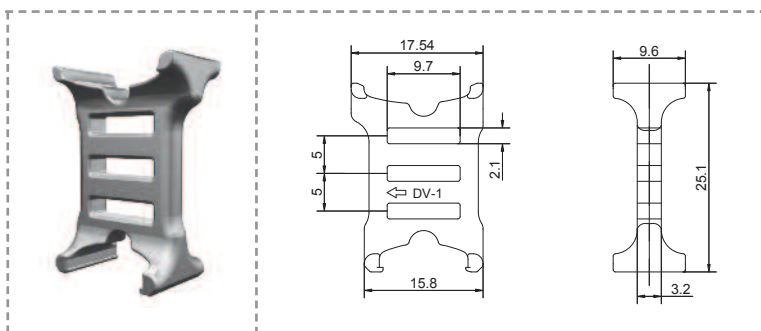
CHAIN CROSS SECTION



CHAIN RADIUS, WEIGHT

Chain Type	Bending Radius(R)	Weight in kg/m
CPS 030.15	38, 48, 75, 100	0.38
CPS 030.25		0.40
CPS 030.35		0.42
CPS 030.50		0.44

DIVIDERS & SEPARATORS

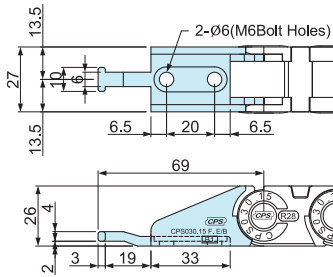


Installing dividers & separators enables cables to divide from each other and also prevent them tangling together.

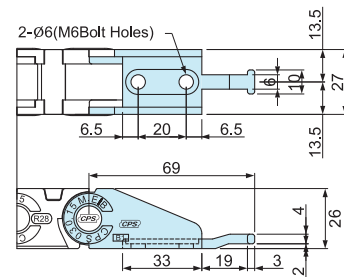
체인 내부에 디바이더와 세퍼레이터를 설치하여 입선되는 케이블을 서로 분리시키는 역할을 하며 **케이블의 엉킴현상을 방지한다.**

MINI Type CPS 030

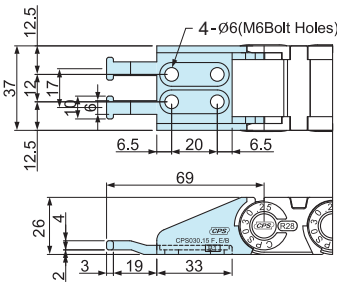
END BRACKET (Tie Wrap Type)



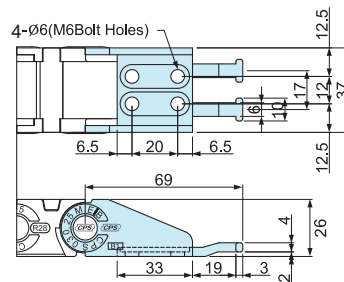
▲ CPS030.15 Fixing point



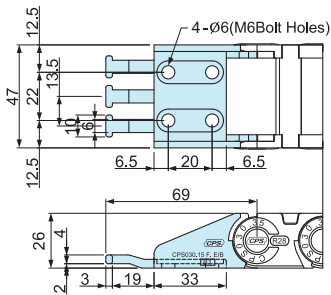
▲ CPS030.15 Moving point



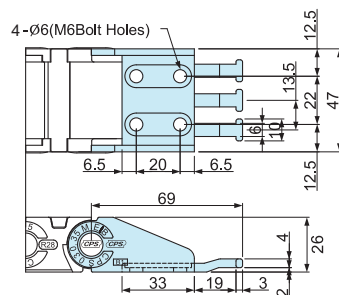
▲ CPS030.25 Fixing point



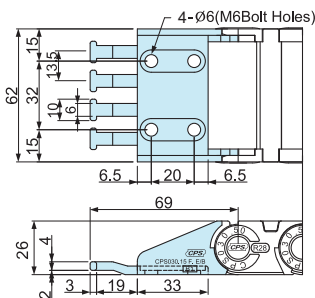
▲ CPS030.25 Moving point



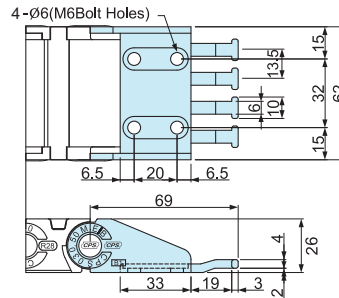
▲ CPS030.35 Fixing point



▲ CPS030.35 Moving point

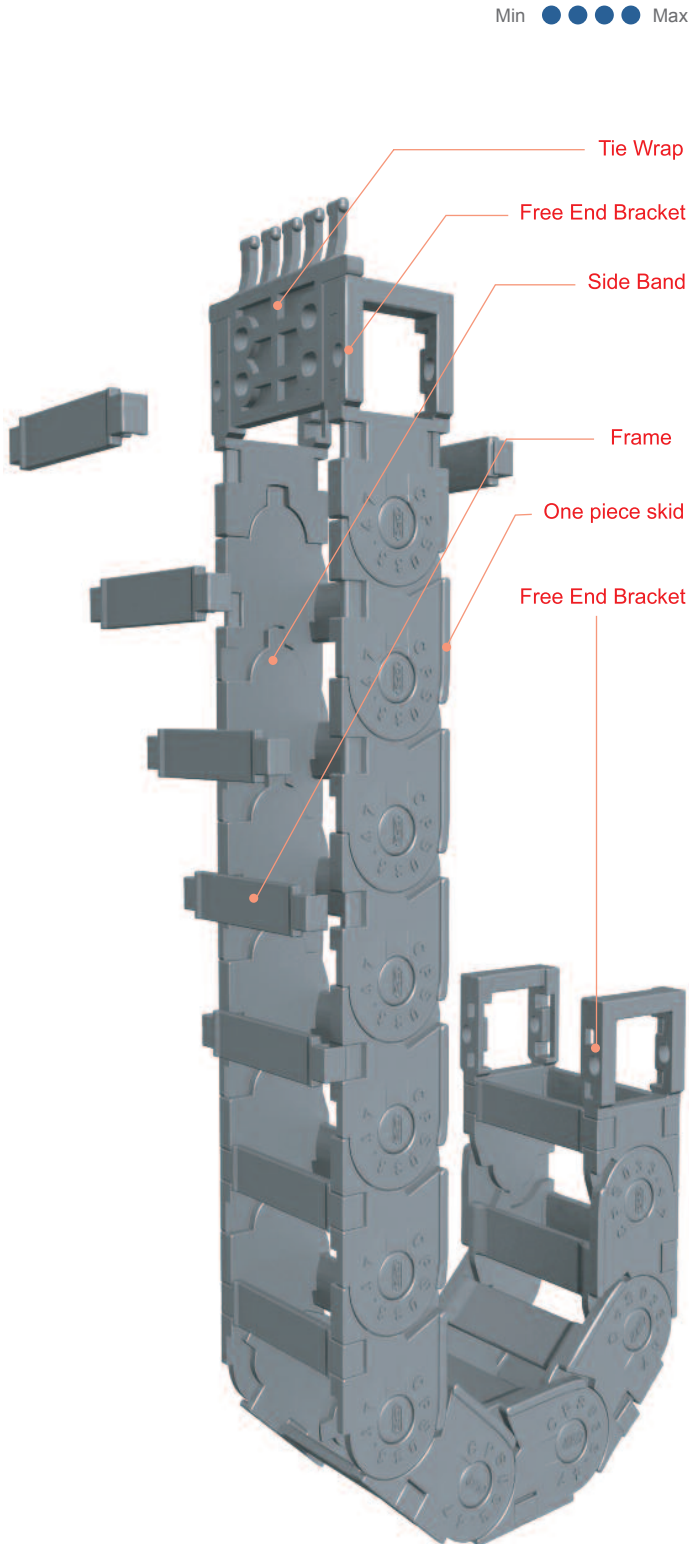


▲ CPS030.50 Fixing point



▲ CPS030.50 Moving point

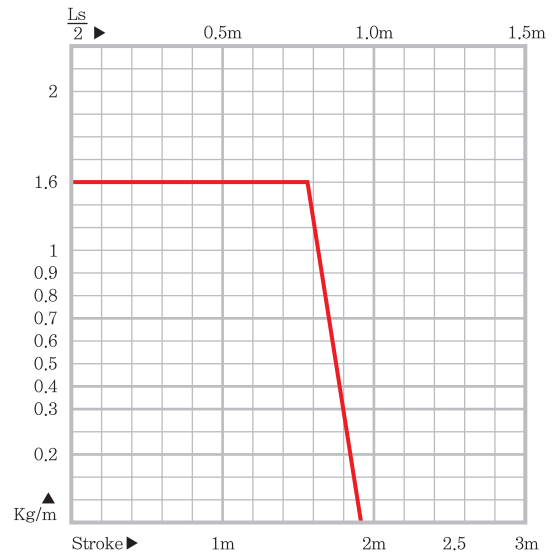
MINI Type **CPS 033**



MATERIAL

- **Chain material :**
CPS-polyamide with glass fiber reinforced, UL94-HB
- **Low Noise :** 40 dB (DIN EN 61672-1)
- **Speed :** 10m / sec
- **Temperature :** -30°C ~ +130°C
- **Other installation Length**
Vertical curve above= max 1.5m
Vertical curve below= max 10m
Side Mounted, Unsupported= max 0.6m
- **Applications :**
Gantry robot, Machining center,
Textile machine, Welding machine, Feeder unit,
Assembly loader, Wood work machine, Fabric machine.

Load diagrams self-supporting length :

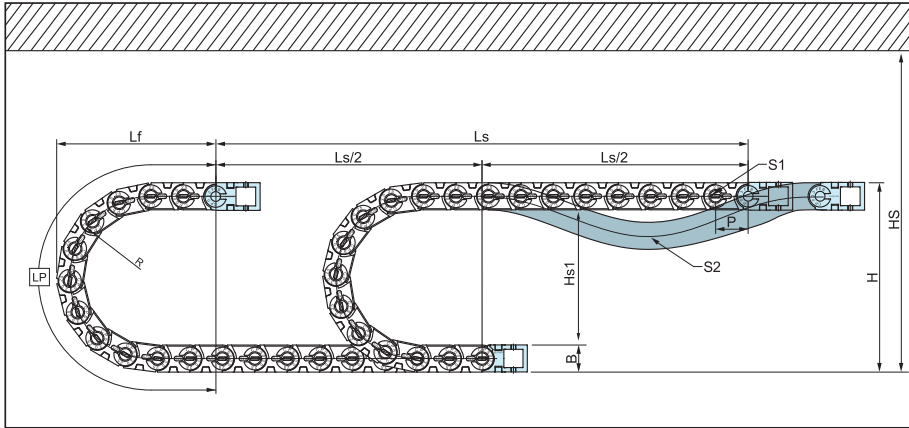


● Calculation of the chain length

$$\left[L = \frac{Ls}{2} + Lp \right]$$

MINI Type CPS 033

LAYOUT OF THE CHAIN



(Dimensions in mm)

Bending radius R	35	45	75	100	120
Lp	242	274	368	446	509
Lf	117	127	157	182	202
H	101	121	181	231	271

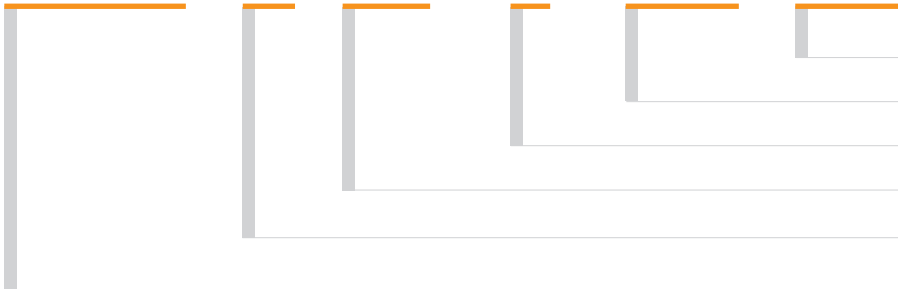
- Ls:** Stroke
- Lp:** Loop Length
- Lf:** Loop Projection
- Hs:** Safe Space

CPS 033 Type

- Pitch P:** 33mm
- Height B:** 31mm
- Height H:** 2R+Bmm
- Hs ≤ H+30mm**
- Hs1 ≤ - 30mm**

ORDERING (주문방법)

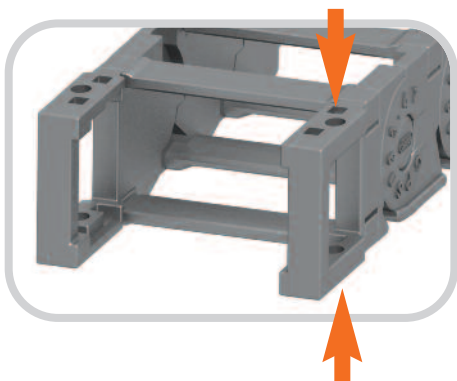
CPS 033 . 37. R75 / E - 900L : 10ST



- 주문수량 Q'ty(set)
- 체인길이 Length(mm)
- 브라켓타입 Bracket Type (B1, B2, B3)
- 곡률반경 Bending Radius (R)
- 내폭 Inside Width

CPS CABLE Chain

BRACKET TYPE (브라켓타입)



EEB (Easy End Bracket)

The fixing end part of cable chain which improve the efficiency of mounting condition by unifying the existing Easy End Bracket and Normal End Bracket.

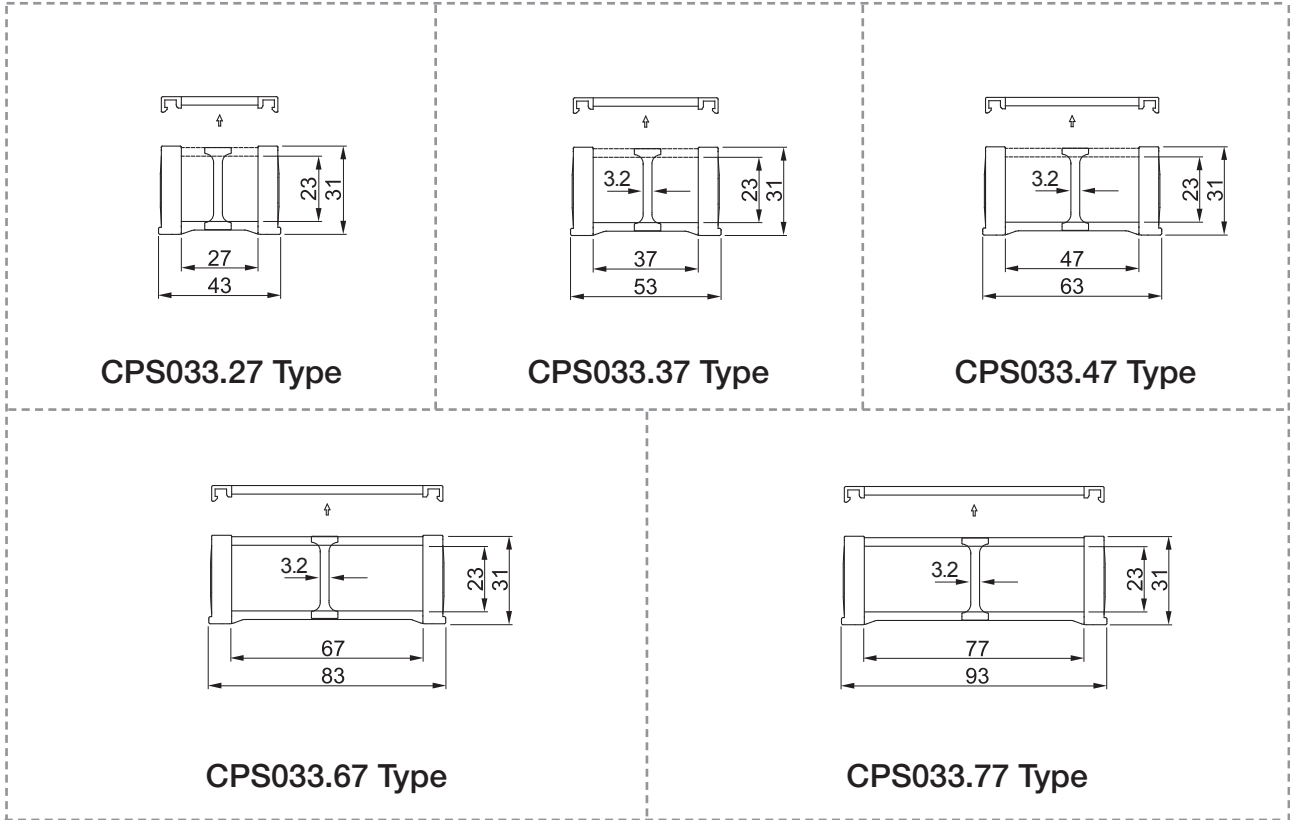
체인을 고정하는 끝부분으로 상·하부 취부의 효율성을 높임.

▶ Above products are patent registered item which can be protected by industrial property right. (상기 제품은 특허등록 제품으로 산업재산권의 보호를 받는 제품입니다.)

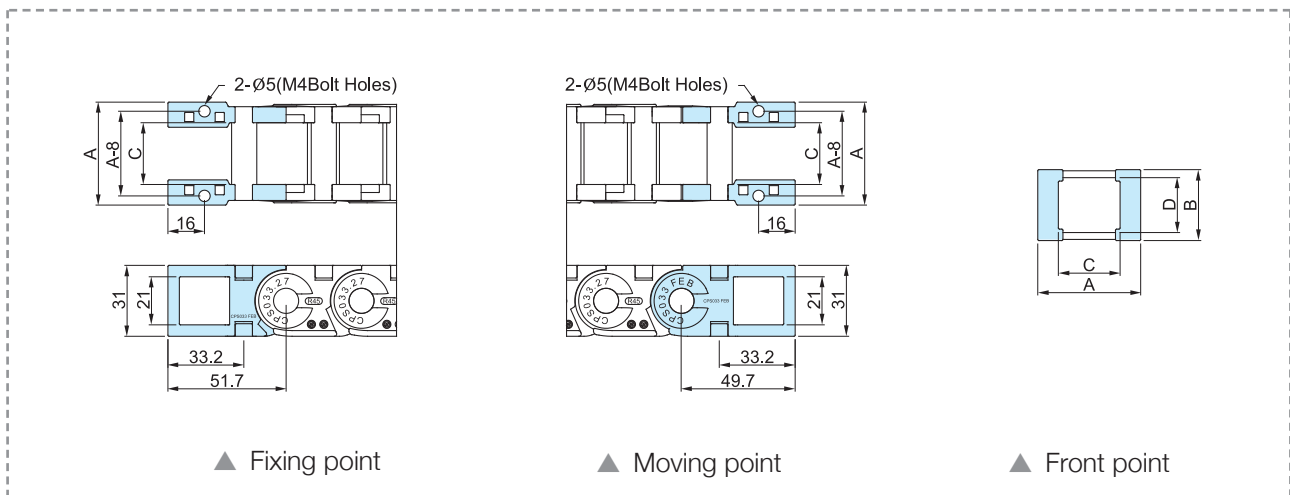


MINI Type **CPS 033**

CHAIN CROSS SECTION



END BRACKET - Easy Type



▲ Fixing point

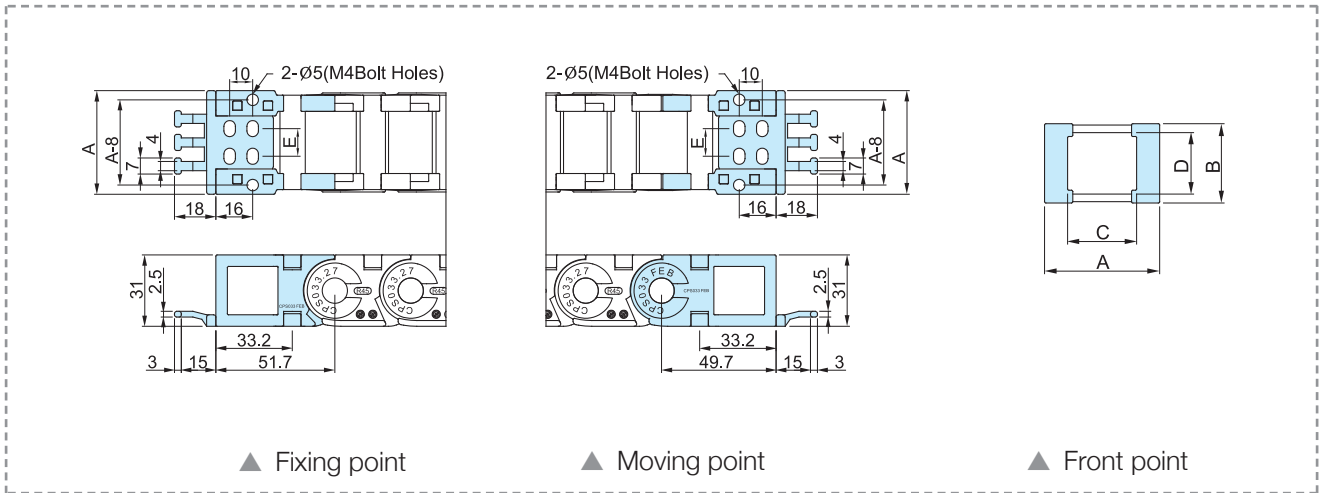
▲ Moving point

▲ Front point

Chain Type	F	B	C	D	Hole Type
CPS 033.27	45		27		M4 Bolt Holes
CPS 033.37	55		37		
CPS 033.47	65	31	47	23	
CPS 033.67	85		67		
CPS 033.77	95		77		

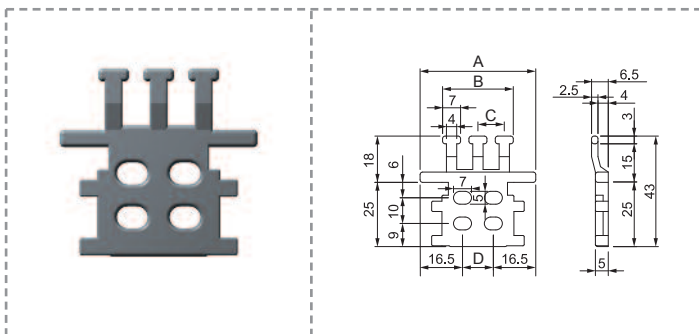
MINI Type CPS 033

EASY END BRACKET - Tie wrap connction



Chain Type	F	B	C	D	E	Hole Type
CPS 033.27	45		27		12	M4 Bolt Holes
CPS 033.37	55		37		22	
CPS 033.47	65	31	47	23	32	
CPS 033.67	85		67		52	
CPS 033.77	95		77		62	

TIE WRAP



Tie wrap prevents cut off problem of the cable by the twisting and pulling movement. The tie wrap of this CPS CABLE Chain has two types, separated with bracket type and attached with bracket type.

Tie Wrap은 케이블체인의 브라켓을 기준으로 설치함으로써 체인의 움직임으로 인해 체인 내의 케이블이나 호스가 당겨져 단선되는 경우를 방지할 수 있다.

CPS CABLE Chain의 Tie Wrap은 브라켓 부분과 근접해서 사용할 수 있는 사양과 브라켓에 결합해서 사용할 수 있는 사양으로 구분되어 사용할 수 있다.

	27	37	47	67	77
A	45.0	55.0	65.0	85	95
B	27.5	41.0	47.9	67.9	77.9
C	10.2	8.5	10.4	10	8.8
D	12.0	22.0	32.0	52	62